

Wallawong

MURRAY GREYS

Wallawong Whisperer: Have you heard the news?

Volume 9, Issue 3

Lachlan and Kate James PH:6545 2439 Farm: 'Derwent Park' Mullaley

December 2009

2009 Sale Results

New and return clients showed increased confidence in the Wallawong breeding program resulting in total clearance of bulls at the Wallawong Murray Grey Sale at 'Derwent Park' Mullaley on Thursday 16 July. Impressive weights and eye muscle areas combined with positive calving ease appealed to both stud and commercial breeders from Queensland, Victoria and throughout NSW.

17 of 17 bulls sold to a top of \$6500 and average of \$3700, reflecting the solid competition for lots throughout the sale. 10 of 13 stud heifers were also sold to a top of \$2750 and an average of \$1155.

The \$6500 top priced bull was Lot 2 Wallawong Riddler, an 845kg son of Lindsay Starbright S117. He combined excellent structural correctness with physical muscularity and calving ease EBV in the top 15%.

Purchased for stud duties by Craig and Jacinta Grant of

Kelso Lindsay Murray Greys, Coleraine, Victoria, Riddler had an EMA EBV in the top 1% of the breed and growth traits in the top 30%. His raw EMA scan was 122 cm² with fat of 12mm and 9 mm on rump and rib.

The \$4750 second top priced bull was Lot 6 Wallawong Rainman, possibly the best credentialed genetic calving ease, high growth bull Wallawong has offered for sale. By Banksia Ridge Zorro out of our best

Starbright female, 830kg Rainman was in the top 5% for calving ease with growth traits in the top 15% and an EMA EBV in the top 5%. His raw EMA scan was 120 cm² with fat scans of 8 mm and 6 mm on rump and rib. Return Wallawong client and commercial breeder Phillip Rose of Armidale purchased the bull to go over Murray Grey and Short-horn cross bred cows to produce easy care progeny for the domestic market.

Two bulls made \$4250, Lot 10 Wallawong Rumble at 840kg EMA 121cm² and Lot 17 Wallawong Romantic 750kg EMA 114cm². Both bulls were sired by the breed's leading eye muscle sire Lindsay Starbright S117 that we purchased in 2005.



Top priced bull Lot 2 C36 Wallawong Riddler pictured with selling agent Tim Walsh (representing purchaser Craig Grant) and Kate James



2nd top price bull Lot 6 C8 Wallawong Rainman

2009 Sale Results continued

A further four sons of Starbright S117 each made \$4000. "The Starbright bulls again showed their popularity with buyers due to their performance, shape and muscularity" Wallawong stud principal Lachlan James said. "Repeat buyers are very impressed by the calves and we have never passed in a Starbright bull" Lachlan added.

In a testament to the Wallawong breeding program and customer service, 60% of bulls went to repeat buyers. Volume buyer and return client Jack Meaney of Collarenabri purchased three grey bulls to average \$3500 to use in a cross breeding situation over his Hereford heifers. He has been using Wallawong bulls for several years.

The stud heifers were purchased by two volume buyers seeking foundation females for their respective new studs. The top priced and feature PTIC heifer was Lot 19 Wallawong Miss Impressive 25 that sold for \$2750 to Scott and Amanda Antcliff of Limpinwood. Sired by Lindsay Starbright S117 and joined to Bank-sia Ridge Zorro, the heifer also combined below average birth weight with positive calving ease and above average fleshing across the topline and hindquarter. Mr Antcliff selected five other unjoined yearling heifers from high performance Wallawong female families for a total average of \$1258.

Allan and Kate Waldon purchased the second top price heifer Lot 25 Wallawong Gale 8th for \$1600 along with three other unjoined females for his breeding operation located at Mendooran. Mr Waldon also selected a bull Lot 12 Wallawong Rufus 775kg EMA 116cm² to improve the carcasses he is producing for his butcher shop at Turrumurra and to convert his cross bred herd to pure Murray Greys.

Once again we thank all those that attended the Sale for their support and look forward to the 2010 Sale.



Update on Crown Prince

New stud sire Wiltshire Crown Prince was weighed and scanned in July with impressive results.

Aged 21 months he weighed 900kg and scanned an eye muscle area of 128cm². Frame score 7+.

From a diverse and structurally correct family line, we believe he will bring a lift in frame score while maintaining muscle, growth and calving ease.

Crown Prince is now out with 50 cows and we look forward his first calves in 2010.

Wiltshire Crown Prince pictured at 21 months. 900kg, EMA 128cm²

2009 WINTER MURRAY GREY GROUP BREEDPLAN EBVS												
	Calv. Ease Direct (%)	Birth Wt. (kg)	200 Day Wt. (kg)	400 Day Wt. (kg)	600 Day Wt. (kg)	Milk (kg)	Scrotal Size (cm)	Eye Muscle Area (sq.cm)	Rib Fat (mm)	Rump Fat (mm)	Retail Beef Yield (%)	IMF %
EBV	-1.6	+4.1	+30	+50	+63	+4	+0.7	+1.9	-0.3	-0.3	+1.1	-0.3
Acc	36%	74%	65%	63%	59%	38%	36%	32%	40%	40%	37%	35%

For those looking for something different next year Crown Prince semen is available at \$88/straw. Other impressive AI sires available with calves already hitting the ground include Wallawong Quarterback and Wallawong Ripsnorter. Check our website for details www.wallawong.com.au and put a package together.

Beef Bonanza Reserve Middleweight Champion by Wallawong Patriot

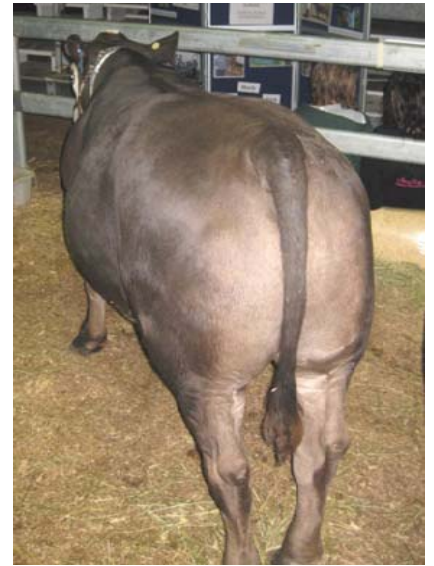
Congratulations to Wallawong client Allan Haley and Gulgong High School who exhibited the Reserve Champion Light Middleweight Steer at the recent Upper Hunter Beef Bonanza in Scone. The steer was sired by Wallawong Patriot who was purchased by Allan at the 2007 bull sale and out of a black baldy cow.

From 81 middleweight entries the steer also achieved Reserve Champion Carcase and was the middleweight jackpot winner. The carcass scored 87.6 pts including full points for EMA and fat cover and he carried the shape and cover that judge



David Bondfield was looking for.

The Upper Hunter Beef Bonanza was an extremely successful event with 224 steers and carcasses judged from led and unled classes. Murray Grey influenced cattle won three of the fifteen classes.



Pictured above and right: Allan Haley's steer by Wallawong Patriot went on to be Reserve Champion Light Middleweight Steer and Carcase. He was exhibited by the students of Gulgong High School.

2009 Calves

All our females have now calved **with all calves being born unassisted**. The natural calves are a mix of Wallawong Quarterback (10 calves), Wallawong Ripsnorter (24 calves), Lindsay Vinnie A201 (2 calves) and Banksia Ridge Zorro (8 calves), along with AI calves by Lindsay Starbright S117 (2 calves), Lindsay West (3 calves) and Monterey Sensational (7 calves). Birthweights have ranged from 29kg to 49kg with an average of 39kg. We are finding that the above genetics are providing our target calves between 35kg and 45kg birthweight with added calving ease and excellent commercial productivity.

We also had 20 calves born unassisted from the newly purchased Springwell cows by Gnoleda Zac.

Understanding our female families - Miss Impressive and Molly

The Molly female line was introduced into the herd with the purchase of Walteela Molly P6 from the Walteela dispersal in 1999. Molly P6 went on to produce many male calves and was an efficient cow prior to leaving the herd at 14yrs old. Molly P6 was also a trait leader for low birthweight, a trait that she passed on to all of her offspring. Although only small in numbers, the Molly derived bulls have always met with strong acceptance at our annual sales due to their versatility and reliably low birthweights.

The Miss Impressive line was purchased in 1996. The original Miss Impressive cow was Furracabad Miss Impressive 12th, with Furracabad Miss Impressive 19 at foot, purchased from the Furracabad dispersal. Miss Impressive 12th was another of the original cows to be productive up until almost 14 years, while Miss Impressive 19 continued to be an active member of the herd until 13 years old. 17% of the mature breeding herd currently comprises Miss Impressive females. Offspring from the Miss Impressive line tend exhibit extra length and growth with many of the sale bulls exceeding frame score 6. 16 bulls have been sold from the Miss Impressive Line, including 4 at the 2009 sale, that saw them sell to \$4,250 to average \$3,500. Another 3 bulls from the Miss Impressive line will be for sale at our 2010 sale event. The line has also been successful as a female producer, with the 2009 top priced heifer also coming from the Miss Impressive family.

Wishing you a safe and happy Christmas and New Year. Hope to see you in 2010.

Best Wishes from us at Wallawong: Lachlan, Kate and Stirling James (and baby #2 due in March).

2010 Sale Bulls	Sire	Birth Wt. (kg)	200 DayWt. (kg)	400 DayWt. (kg)	600 DayWt. (kg)	Mat. CowWt. (kg)	Milk (kg)	EMA (sq.cm)	Rib Fat (mm)	Rump Fat (mm)
LEJ D1	Starbright S117	+6.2	+30	+43	+64	+62	0	+3.0	-1.0	-1.3
LEJ D5	Starbright S117	+4.6	+29	+42	+61	+57	-1	+3.2	-1.2	-1.7
LEJ D6	M.Starlight	+4.0	+19	+30	+45	+41	+1	+1.9	+0.4	+0.5
LEJ D17	Vinnie A201	+1.8	+15	+23	+31	+29	+7	+1.3	+0.1	+0.1
LEJ D20	Vinnie A201	+3.9	+27	+40	+57	/	+7	+1.7	-0.5	-0.7
LEJ D21	Vinnie A201	+2.7	+18	+29	+43	+43	+3	+2.2	+0.1	+0.1
LEJ D27	Vinnie A201	+3.8	+22	+33	+47	+53	+3	+1.9	+0.6	+0.7
LEJ D29	Zorro	+3.1	+28	+36	+53	+57	+3	+1.6	-0.5	-0.5
LEJ D31	Zorro	+3.0	+28	+42	+65	+76	+2	+1.9	-0.7	-0.6
LEJ D33	Zorro	+2.6	+25	+37	+54	/	+4	+0.9	-1.0	-1.2
LEJ D36	Zorro	+3.9	+30	+47	+64	/	+6	+1.8	-0.2	-0.3
LEJ D44	Zorro	+2.7	+22	+33	+52	+53	+1	+2.8	-0.5	-0.6
LEJ D47	Zorro	+4.0	+27	+41	+62	+67	+3	+1.2	-0.9	-1.0
LEJ D51	Vinnie A201	+4.1	+25	+41	+54	+54	+4	+2.4	0.0	0.0
LEJ D55	Vinnie A201	+3.7	+24	+37	+54	/	+6	+1.8	0.0	0.0
LEJ D57	Vinnie A201	+3.4	+22	+37	+52	+67	+5	+1.7	0.0	-0.1
LEJ D60	Vinnie A201	+2.2	+21	+33	+49	+54	+3	+1.7	-0.7	-0.8
LEJ D62	Vinnie A201	+2.6	+18	+31	+42	/	+4	+1.9	0.0	0.0
LEJ D63	Zorro	+3.3	+24	+36	+59	/	+4	+1.6	-0.9	-1.2
<u>Breed Avg EBVs for 2008 Calves</u>		+2.9	+16	+25	+38	+38	+3	+1.1	-0.2	-0.2

Bold denotes top 20% of 2008 born calves

2010 Sale Bulls (19 mths)



Left: D1



Right: D36



Left: D5



Right: D6

