



CARCASE QUALITY BULL SALE

1pm - 10th August 2023



CONSISTENT ● CARCASE ● PERFORMANCE



National Carcase Competition
Class Winner

On Property
'Marriot Park'
Gunnedah, NSW



Lachlan & Kate James | 0402 839 373 |



Find us on Facebook - Wallawong Premium Beef

2018 Beef Australia

First - Open Fed Pen of Three Carcasses
Exhibited by Wallawong & H Birchall



2019 Wingham Beef Week

Reserve Champion Heavyweight Steer
Sire: Wallawong Ripsnorter



2019 Upper Hunter Beef Bonanza (432 entries).
Supreme Champion Carcase
(Wallawong and Groveleigh P/S)
3 Highest Scoring Carcases
Champion Unled Steer (pictured)
(Wallawong and H Birchall)



2019 Upper Hunter Beef Bonanza
Champion Heavyweight Led Steer
(Wallawong and H Birchall)
Sire: Wallawong Yearbook

2021 ANZ National Carcase Competition
Rockhampton Beef Week
Winners of Class 7





CARCASE QUALITY BULL SALE

Commencing at 1pm - THURSDAY 10th AUGUST 2023

On Property - 'Marriot Park', Gunnedah, NSW

Lachlan & Kate James

0402 839 373

Elders Gunnedah



Nik Hannaford - 0417 201 460

Jon Glover - 0428 486 887

Brian Kennedy - 0427 844 047

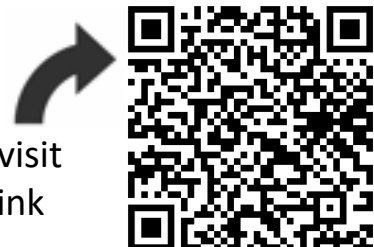
Paul Dooley – Auctioneer

0458 662 646

Sale interfaced with



Scan here to visit
online sale link



3% rebate to stock and station agents nominating buyers, personally attending the sale (or facilitating the purchase and nominating the buyer 24hrs prior to the sale) and settling accounts within 7 days.

**The sale will be conducted exclusive of GST
PLEASE BRING THIS CATALOG TO THE SALE**

SALE INFORMATION

INSPECTIONS: Open day on property, Friday 4th August 10am-3pm. Sale day, Thursday 10th August 2023 from 10am. Appointments can be arranged prior to sale by contacting vendors, Lachlan & Kate James, on phone 0402 839 373.

REBATE: 3% on bulls to outside agents nominating buyers, personally attending the sale (or facilitating the purchase and nominating the buyer 24hrs prior to the sale) and settling the account within 7 days. This will be strictly enforced.

DELIVERY: Delivery will be given at the completion of the sale.

BUYER'S INSTRUCTION SLIP: Must be completed by all successful purchasers and registered with the selling agent prior to delivery. Please find buyers instruction slip at the back of the catalogue.

TRANSPORT OPTIONS: Wallawong Premium Beef is offering FREE TRANSPORT, within 200 km of Gunnedah, for any bull purchased at the sale, and to purchaser's of 4 or more female lots.

As we will be using a paid courier to deliver some of the sale cattle, purchasers outside the 200km limit will be billed the extra mileage (if greater than 200km) at a rate of \$2.25/km per delivery. We are also offering guaranteed maximum delivery prices (+gst) per bull for interstate buyers. WA/TAS - \$600, SA \$500, Vic \$450, Sth/Central QLD \$450.

In addition, a free delivery service to Goondiwindi/ Mungindi, Qld is being offered on purchase of 3 or more bulls.

Buyer's instruction slip must indicate the intention to undertake the free/subsidised transport offer. Purchasers should note that the bulls are at the purchaser's risk at the fall of the hammer and all transport offered by Wallawong is at the purchaser's risk.

TRANSFERS: Any purchaser wishing to opt out of Angus Australia (AA) disclosing personal information need to do this in writing to AA. More information regarding AA's privacy policy can be found at <http://www.angusaustralia.com.au/privacy/>

HERD HEALTH and MANAGEMENT: The Wallawong herd is TB and Brucellosis free. For approximately 15 years the herd held an MN2 protected/JBas 8 accreditation as part of the now defunct Johnes Market Assurance Program/JBas program. With the deregulation of WA Johnes entry requirements, we have not pursued further testing and now hold a JBas 6 status. All lots in the sale are eligible for entry into all states and territories of Australia.

- All bulls have been booster vaccinated against Clostridial diseases and Leptospirosis in May 2023. They have also been treated against internal and external parasites in May/July 2023. Furthermore, all bulls were vaccinated against Vibriosis and Three-Day Sickness in July/August 2023.

- All bulls have been vaccinated as yearlings with 3 germ 'tick fever' vaccine for direct entry into ticky country.

- All bulls have been hair tested negative for PI pestivirus.

- All bulls have undergone a crush side semen test and physical penile examination by Excel Genetics

- All registered bulls have been sire verified, with the exception of Lots 3, 4, 5, 32, 34, 37, & 38 (pending), 13 & 25 (commercial). Bulls are sold on the basis that the pending verifications results will support the pedigrees printed.

- All Silver/Grey bulls have been tested for Myostatin NT281 with results available on supplementary sheet.

For Black Angus cattle the following suffixes are used in the catalogue: PV = Both parents have been verified by DNA, SV = The sire has been verified by DNA, # = DNA verification has not been conducted.

INSURANCE: Purchases become the responsibility of the buyer at the fall of the hammer. While all care will be taken by the vendors, we recommend buyers insure their purchases. Please contact Achmea Insurance or the selling agent to arrange insurance.

GUARANTEES: All bulls offered for sale are guaranteed to be fertile and capable of natural service. Any claim made must be in writing and accompanied by a veterinary certificate within two (2) years of the date of sale (see inside next page for details).

SALE DAY SAFETY: All lots will be penned and available for viewing on sale day. Persons enter the sale pens at their own risk, and no prams or children under 15 years are to enter sale pens.

TERMS AND CONDITIONS OF SALE: Agents will display their terms and conditions of sale on the day of the sale.

GST (GOODS AND SERVICES TAX): All lots sold are GST exclusive. As outlined in the agents terms and conditions, GST will be added on to the auction purchase price upon invoicing.

TRAVEL: Qantas and Virgin provide flights between Sydney and Tamworth. Tamworth is located 74km East of Gunnedah. Contact Qantas on 131313 to arrange bookings.

CATERING: Morning tea, tea and coffee, cold drinks and BBQ lunch available at the open day, previewing and sale day.

ACCOMMODATION: There are numerous motels in Gunnedah, book early to avoid disappointment.

Gunnedah Motor Inn	02 67422377	Harvest Lodge Motel	02 67423400
Red Chief Motel	02 67420833	Plains Motor Inn	02 67422511



FERTILITY GUARENTEE

We guarantee all bulls to be structurally sound, fertile and capable of natural service. Bulls are guaranteed for up to two years from the date of sale. However, should a bull prove not to be able to perform the above duties we will:

- Replace the bull with an agreed substitute if available, or
- Issue a credit equal to the purchase price less salvage value. This credit may be used at future Wallawong sales.

The guarantee covers the purchase value of the bull, without interest, costs or damages. The guarantee shall apply providing the bull's incapacity is not caused by injury, misadventure or disease contracted since leaving Wallawong and is calculated on the basis that the guarantee is reduced by half of the purchase price for each year of service from the sale date. A veterinary certificate must also be supplied by the purchaser.

CONSISTENT ● CARCASE ● PERFORMANCE

Introduction to Wallawong Premium Beef

Welcome to our 2023 Bull Sale event.

While being a food producer in a growing world always has its challenges, the winter crop plantings are looking promising and the need to produce quality carcass-focused cattle to market specifications is constant. **With this in mind it has never been more important to invest in quality cattle genetics.**

Recently, Wallawong genetics were again awarded as one of the highest quality in the state. For the second consecutive year a **Wallawong sired steer was the Supreme Champion Carcass at Wingham Beef Week.**

This steer was sired by Wallawong Password, A Black Angus bull, and from a silver female with more than 20 years of Wallawong genetics. Bred by Heath Birchall, the carcass scored a massive 95.83pts, including an EMA of 108cm² and an **MSA index score of 65.35.**



This year's offering of bulls includes Silvers and Greys that are related to the female and Blacks that are related to the sire of the Supreme Carcass.

This year we are offering of 38 bulls. The Silver, Grey and Black bulls again display their excellent muscularity and industry leading carcass attributes. In addition, their short coats and Coat Type EBVs make them a valuable asset to Northern producers.

All cattle in the sale are 3 Germ (tick fever), Vibrio, 3 Day Sickness and 7in1 vaccinated, and offered with industry leading guarantees and transport assistance.

We look forward to discussing your cattle requirements, whether they be Silver, Grey or Black. Our emphasis is on delivering what our clients require, and making sure they receive the highest level of satisfaction from their purchase, our service, and our partnership in helping make their business more profitable.

The sale will be a live video auction also interfaced through AuctionsPlus, we advise clients to come and look at the cattle prior to the sale date, at either our **open day on Friday 4th August (10am-3pm)**, or at any other time by appointment.

We look forward to your involvement in the sale.

Lachlan, Kate, Stirling and Fraser James

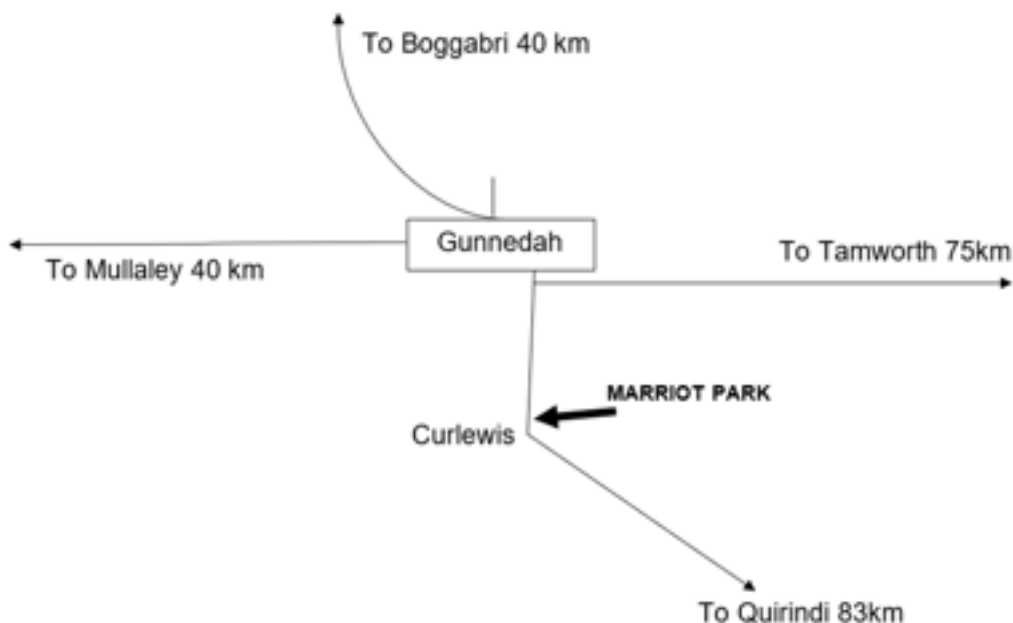
DIRECTIONS TO 'MARRIOT PARK'

From Tamworth (90 km)

Take Oxley Highway to Gunnedah. Just before reaching Gunnedah township, turn left (on to Kamilaroi Hwy) at large roundabout and continue toward Quirindi. Marriot Park is located 12 km from roundabout on the LHS of the Kamilaroi Hwy. Look for Wallawong signs.

From Gunnedah (15 km)

Take Kamilaroi Highway South toward Quirindi. Marriot Park is located 12 km from Gunnedah on the left hand side of the highway. Look for signs.



*Proud Suppliers and Supporters of
Wallawong Premium Beef*



GORDON BARRY & CO

- | | | | |
|-----------|--------------|----------------|------------|
| * Cattle | * Sheep | * Garden | * Equine |
| * Poultry | * Chemical | * Irrigation | * Cleaning |
| * Seed | * Fertiliser | * Pest Control | * Boots |



GUNNEDAH

19 Chandos Street Gunnedah NSW 2380 Ph: 02 6742 067

E- admin@gordonbarry.com.au www.facebook.com/gordonbarryco

COMPARING ANIMALS USING EBVs

EBVs are a tool that will help you to make more educated decisions when you are choosing breeding stock. The best way to make use of this information is to first decide YOUR breeding goals and secondly to select animals with EBVs that match those criteria.

Birth Weight EBV (kg) is based on the measured birth weight of progeny, adjusted for dam age. The lower the value the lighter the calf at birth and the lower the likelihood of a difficult birth. This is particularly important when selecting sires for use over heifers.

200-Day Milk EBV (kg) is an estimate of an animal's milking ability. For sires, this EBV indicates the effect of the daughter's milking ability, inherited from the sire, on the 200-day weight of her calves. For dams, it indicates her own milking ability.

200 Day Growth EBV (kg) is calculated from the weight of progeny taken between 80 and 300 days of age. Values are adjusted to 200 days and for age of dam. This EBV is the best single estimate of an animal's genetic merit for growth to early ages.

400-Day Weight EBV (kg) is calculated from the weight of progeny taken between 301 and 500 days of age, adjusted to 400 days and for age of dam. This EBV is the best single estimate of an animal's genetic merit for yearling weight.

600-Day Weight EBV (kg) is calculated from the weight of progeny taken between 501 and 900 days of age, adjusted to 600 days and for age of dam. This EBV is the best single estimate of an animal's genetic merit for growth beyond yearling age.

Mature Cow Weight EBV (kg) is based on the cow weight when the calf is weighed for weaning. This EBV is an estimate of the genetic difference in cow weight at 5 years of age and is an indicator of growth at later ages and potential feed maintenance requirements of the females in the breeding herd. Smaller, or more moderate EBVs are generally more favourable. The Mature Cow Weight EBV may also be used by steer breeders wishing to grow animals out to a larger weight.

Scrotal Size EBV (cm) is calculated from the circumference of the scrotum, measured in centimetres and adjusted to 400 days of age. This EBV is an estimate of a sire's genetic merit for scrotal size and is positively correlated to age of puberty in female progeny.

Carcase Weight EBV (kg) is based on abattoir carcass records and is an indicator of the genetic differences in carcass weight at the standard age of 650 days.

Eye Muscle Area EBV (sq cm) is calculated from measurements from live animal scans and from abattoir carcass data. This EBV estimates genetic differences in eye muscle area at the 12/13th rib site of a 300 kg dressed carcass. More positive EBVs indicate better muscling on animals. Sires with relatively higher EMA EBVs are expected to produce better muscled and higher percentage yielding progeny at the same carcass weight than sires with lower EMA EBVs.

Rib Fat and Rump Fat EBVs (mm) are calculated from measurements of subcutaneous fat depth at the 12/13 rib site and the P8 rump site (from live animal scans and from abattoir carcasses) and are adjusted to a standard 300 kg carcass. These EBVs are indicators of the genetic differences in fat depth on a standard 300 kg carcass. Sires with low, or negative, fat EBVs are expected to produce leaner progeny at any particular carcass weight than sires with higher EBVs.

Please note that Murray Grey and Angus Australia EBVs are NOT directly comparable and operate from different bases. Society averages are shown below.

June 2023 Murray Grey BREEDPLAN - Breed Avg. EBVs for 2021 Born Calves																	
	CE DIR	CE DTR	GL	BW	200	400	600	MCW	MILK	SS	DTC	CW	EMA	RIB	RUMP	RBV	IMF
Average	-0.9	+0.0	-0.7	+3.6	+24	+38	+54	+56	+4	+0.5	-1.8	+34	+1.7	-0.2	-0.2	+0.9	+0.1

\$ Index Values			
	VTI	SI	HGFSI
Average	\$40	\$41	\$57

TransTasman Angus Cattle Evaluation - July 2023 Breed Average EBV's																		
	CE DIR	CE DTR	GL	BW	200	400	600	MCW	MILK	DTC	SS	CW	EMA	RIB	RUMP	RBV	IMF	NFI-F
EBV	+2.2	+2.6	-4.8	+4.1	+50	+90	+117	+100	+17	-4.6	+2.1	+66	+6.3	+0.0	-0.3	+0.5	+2.2	+0.19

\$ Index Values		
	ABI	ABLFCI
EBV	\$197	\$339



2023 SUPREME CHAMPION CARCASS - WINGHAM BEEF WEEK

Sired by Wallwong Password (Black Angus) from a Silver cow with more than 20yrs Wallawong breeding. Bred by Heath Birchall. Carcass score of 95.83pts, MSA index 65.35. Supreme Champion Carcass from 139 entries.

LOT 1

WALLAWONG SKIN IN THE GAME S8 (PB)

IDENT: LEJ S8 DOB: 08/08/2021 COLOUR: Silver

AYR PARK HUGH H77 (GR2)
S: **WOODBURN PARINGA P49 (PB)**
WOODBURN MISS PANSY G26 (PB)

LINDSAY STARBRIGHT S117+97 (PB) (AI)
D: **WALLAWONG VALDAWN H60 (PB) (ET)**
MT VIEW VALDAWN JC Q69 (PB)

Comments: Skin In The Game S8 is exactly that, a bull that keeps the profits rolling in with his versatility and productive features while still performing in the top 15% for EMA. He displays good hair and skin type, and his smooth shoulders and easy doing ability make him an excellent option for heifer matings and production in Northern Australian environments. His dam was recently sold into Queensland, and had one of 2022s pick bull calves at foot. A half maternal brother sold for \$16k at last year's sale.



\$ Index Values			
	VTI	SI	HGFSI
Value	\$47	\$46	\$65
Average	\$40	\$41	\$57



Sire - WOODBURN PARINGA P49

	CE DIR	CE DTR	GL	BW	200	400	600	MCW	MILK	SS	DTC	CW	EMA	RIB	RUMP	RBY	IMF
EBV	-0.3	-0.8	-0.1	+3.6	+27	+45	+63	+64	+5	+0.4	-1.5	+45	+2.6	-0.7	-0.9	+1.8	-0.3
Acc	39%	33%	48%	60%	59%	61%	64%	55%	44%	66%	32%	56%	48%	54%	54%	52%	45%

June 2023 Murray Grey BREEDPLAN

Traits Observed: 200WT,600WT(x2),SS,FAT,EMA,IMF

Purchaser: _____

Price: _____

LOT 2

WALLAWONG SPOKESMAN S41 (PB)

IDENT: LEJ S41 DOB: 02/10/2021 COLOUR: Silver

WALLAWONG RIPSNOTER (PB)
S: **WALLAWONG QUANTITY Q6 (PB)**
BUNDALÉER ANTOINETTE H48 (PB)

TULLIBARDINE JEOPARDY J14 (PB)
D: **WALLAWONG CASSIE P19 (PB)**
ONDIONG CASSIE 198TH (PB)

\$ Index Values			
	VTI	SI	HGFSI
Value	\$50	\$46	\$75
Average	\$40	\$41	\$57



Comments: Spokesman S41 is a young bull with significant frame for age. His growth EBVs are impressive (all top 20%), as is his EMA EBV. Combine this with his excellent mobility, sound coat type and smooth shoulders, he is bound to be a profitable bull for those producing progeny for the heavy domestic market.



Sire - WALLAWONG QUANTITY Q6



Dam - WALLAWONG CASSIE P19

	CE DIR	CE DTR	GL	BW	200	400	600	MCW	MILK	SS	DTC	CW	EMA	RIB	RUMP	RBY	IMF
EBV	-1.0	-0.4	-0.4	+5.0	+31	+48	+76	+85	+2	+1.0	-1.9	+47	+2.3	-0.2	-0.3	+1.4	+0.1
Acc	31%	26%	37%	53%	59%	58%	60%	50%	39%	65%	25%	52%	43%	49%	49%	46%	38%

June 2023 Murray Grey BREEDPLAN

Traits Observed: 200WT,600WT(x2),SS,FAT,EMA,IMF

Purchaser: _____

Price: _____

LOT 3

WALLAWONG SUPERSONIC S56 (PB) (AI) (ET)

IDENT: LEJ S56 DOB: 02/07/2021 COLOUR: Silver

EYLWARRA SANDS FALCON F33 (PB)
S: TULLIBARDINE JEOPARDY J14 (PB) (AI)
TULLIBARDINE KATIE E46 (PB) (AI)

LINDSAY COMMANDER C121 (PB)
D: GLENLIAM FARM ANTOINETTE K28 (PB)
GLENLIAM FARM ANTOINETTE B42 (PB)

Comments: Supersonic S56 is a very docile bull with a growth and maturity pattern to produce heavy domestic offspring or bullocks for grass or feedlot finishing. His sire has been one of the most influential bulls in the breed, and he has passed the traits of body length and strong topline onto this bull. Excellent growth EBVs, being in the top 10-20% and top 25% for EMA.

\$ Index Values			
	VTI	SI	HGFSI
Value	\$44	\$42	\$68
Average	\$40	\$41	\$57



Sire - TULLIBARDINE JEOPARDY J14

	CE DIR	CE DTR	GL	BW	200	400	600	MCW	MILK	SS	DTC	CW	EMA	RIB	RUMP	RBY	IMF
EBV	-2.2	+0.1	-1.7	+4.8	+30	+48	+75	+80	+1	+1.1	-1.4	+44	+2.2	-1.0	-1.4	+1.7	-0.3
Acc	45%	37%	53%	66%	67%	65%	68%	59%	52%	69%	31%	59%	50%	57%	57%	54%	48%

June 2023 Murray Grey BREEDPLAN

Traits Observed: 200WT(x2),600WT(x2),SS,FAT,EMA,IMF

Purchaser: _____

Price: _____

LOT 4

WALLAWONG SHIP TO SHORE S57 (PB) (AI) (ET)

IDENT: LEJ S57 DOB: 02/07/2021 COLOUR: Silver

WILLALOOKA PHARAOH P47 (PB)
S: GNOLEDA ADVANCE (PB) (AI)
GNOLEDA TRUDY M53 (PB)

GLENLIAM FARM YOKAHAMA Y56 (PB)
D: GLENLIAM FARM ANTOINETTE B11 (PB)
GLENLIAM FARM ANTOINETTE Y91 (GR1) (AI) (ET)

Comments: Ship To Shore S57 contains outcross genetics in a package that combines sound visual muscularity and finishing ability. This is supported by his EBVs, being in the top 5% for Fat EBVs. A bull with sound hair type and mobility, making him a suitable option for Northern production systems focussing on heavy domestic offspring.

\$ Index Values			
	VTI	SI	HGFSI
Value	\$25	\$29	\$48
Average	\$40	\$41	\$57



Dam - GF ANTOINETTE B11

	CE DIR	CE DTR	GL	BW	200	400	600	MCW	MILK	SS	DTC	CW	EMA	RIB	RUMP	RBY	IMF
EBV	-1.5	+1.9	-2.0	+3.8	+22	+37	+56	+71	0	+0.2	-1.7	+29	+0.4	+1.2	+1.6	-1.0	+0.9
Acc	51%	45%	55%	67%	69%	68%	70%	63%	59%	68%	44%	63%	52%	59%	59%	56%	51%

June 2023 Murray Grey BREEDPLAN

Traits Observed: 200WT(x2),600WT(x2),SS,FAT,EMA,IMF

Purchaser: _____

Price: _____

LOT 5

WALLAWONG SOVEREIGN S46 (PB) (AI) (ET)

IDENT: LEJ S46 DOB: 28/07/2021 COLOUR: Grey

WOODBURN WARRIOR A69 (PB)
S: EYLWARRA SANDS FALCON F33 (PB)
EYLWARRA SANDS MILKMAID Z64 (PB) (AI)

BUNDALEER CASH FLOW Y6 (PB)
D: BUNDALEER T.T. B33 (PB)
BUNDALEER T.T. T30 (PB)

\$ Index Values			
	VTI	SI	HGFSI
Value	\$49	\$59	\$76
Average	\$40	\$41	\$57



Comments: Sovereign S46 offers a powerhouse of body depth and muscular volume. He does this with one of the most sort after pedigrees, being a son of the international donor dam T.T. B33, a Sydney Royal Champion. His thick topline and wide hindquarter are features that combine with an excellent temperament and easy fleshing ability. His physical attributes are supported by exceptional EBVs, being in the top 10% for all growth traits and top 1% for EMA. All this while also being above average for IMF. A half maternal sister also recently sold into Queensland for \$9k.



Dam - BUNDALEER T.T. B33

	CE DIR	CE DTR	GL	BW	200	400	600	MCW	MILK	SS	DTC	CW	EMA	RIB	RUMP	RBY	IMF
EBV	-3.7	+0.6	-1.0	+4.0	+34	+61	+78	+87	+5	+0.9	-2.0	+60	+3.8	-0.3	-0.5	+1.7	+0.3
Acc	50%	42%	56%	69%	69%	68%	70%	64%	59%	70%	37%	62%	54%	62%	62%	59%	54%

June 2023 Murray Grey BREEDPLAN

Traits Observed: 200WT(x2),600WT(x2),SS,FAT,EMA,IMF

Purchaser: _____

Price: _____

LOT 6

WALLAWONG SUPER SOAKER S2 (PB)

IDENT: LEJ S2 DOB: 27/07/2021 COLOUR: Silver

LINDSAY FUSION F94 (PB)
S: WALLAWONG MAGIC MAN M47 (PB)
WALLAWONG EMERALD F68 (PB)

ONDIONG 2F D153 (PB)
D: ONDIONG CASSIE 198TH (PB)
ONDIONG CASSIE 155TH (PB)

\$ Index Values			
	VTI	SI	HGFSI
Value	\$59	\$57	\$88
Average	\$40	\$41	\$57



Comments: Super Soaker S2 is another quality bull to wet your appetite. A bull with stud sire potential, both in pedigree and performance. He has risen to the top of a large contemporary group, and possesses above average muscularity with a wide topline and deep hindquarter. Backing this up are a smooth coat type and great temperament. Outstanding growth EBVs being in the top 1-5% and top 10-20% for Scrotal size, EMA and IMF are also a feature. His dam has been a stand out producer and recently sold to Consolidated Pastoral Company to be used as an IVF donor to produce bulls highly suited to Northern environments. A half maternal brother also sold into Queensland for \$13k last year.



Sire - WALLAWONG MAGIC MAN M47

	CE DIR	CE DTR	GL	BW	200	400	600	MCW	MILK	SS	DTC	CW	EMA	RIB	RUMP	RBY	IMF
EBV	-0.5	-0.2	+0.1	+6.5	+37	+63	+94	+108	+2	+1.3	-1.9	+60	+2.3	-0.2	-0.3	+1.2	+0.3
Acc	35%	28%	48%	64%	65%	69%	69%	58%	41%	69%	26%	59%	46%	54%	54%	50%	41%

June 2023 Murray Grey BREEDPLAN

Traits Observed: 400WT,600WT,SS,FAT,EMA,IMF

Purchaser: _____

Price: _____

LOT 7

WALLAWONG STATUS QUO S5 (PB) (AI)

IDENT: LEJ S5 DOB: 05/08/2021 COLOUR: Silver

AYR PARK HUGH H77 (GR2)
S: **WOODBOURN PARINGA P49 (PB)**
WOODBOURN MISS PANSY G26 (PB)

BUNDALEER BIG BANG B5 (PB) (AI)
D: **BUNDALEER LOLITA H17 (PB)**
BUNDALEER LOLITA X1 (PB)

\$ Index Values			
	VTI	SI	HGFSI
Value	\$56	\$59	\$78
Average	\$40	\$41	\$57



Comments: Status Quo S5 is a well grown bull that offers great potential. He suffered from 3 Day Sickness in March, and has now recovered and is rapidly catching back up to his peers. His EBVs indicate his potential, with growth traits all in the top 5%. A quick look at his pedigree shows a depth of quality breeding, being from an international donor female that has sold offspring to \$25k. Don't overlook this quiet bull if you are looking to produce productive heavyweight domestic or feeder offspring.



Sire - WOODBOURN PARINGA P49



Dam - BUNDALEER LOLITA H17

	CE DIR	CE DTR	GL	BW	200	400	600	MCW	MILK	SS	DTC	CW	EMA	RIB	RUMP	RBY	IMF
EBV	-1.7	-2.2	-2.1	+5.3	+39	+67	+87	+91	+6	+0.7	-2.1	+57	+1.9	-0.8	-1.0	+1.3	+0.1
Acc	35%	27%	57%	65%	64%	68%	68%	57%	42%	69%	28%	59%	48%	56%	56%	52%	45%

June 2023 Murray Grey BREEDPLAN

Traits Observed: GL,400WT,600WT(x2),SS,FAT,EMA,IMF

Purchaser: _____

Price: _____

LOT 8

WALLAWONG SALVATION S20 (PB) (AI)

IDENT: LEJ S20 DOB: 04/09/2021 COLOUR: Silver

LINDSAY STARBRIGHT S117+97 (PB) (AI)
S: **LINDSAY STARBRIGHT Y47 (PB)**
LINDSAY KATHYS NEWTREND40+96 (GR1) (AI)

WALLAWONG MATCH FIXER (PB) (AI) (ET)
D: **WALLAWONG LOLITA Q9 (PB)**
BUNDALEER LOLITA D24 (PB)

\$ Index Values			
	VTI	SI	HGFSI
Value	\$49	\$53	\$69
Average	\$40	\$41	\$57

Comments: Salvation S20 is a moderately framed sire with good hair type and easy doing ability. He has above average muscularity and is best suited to producing medium weight domestic offspring. EMA EBV in the top 10%.



Sire - LINDSAY STARBRIGHT Y47



Dam - WALLAWONG LOLITA Q9

	CE DIR	CE DTR	GL	BW	200	400	600	MCW	MILK	SS	DTC	CW	EMA	RIB	RUMP	RBY	IMF
EBV	+1.8	+1.8	-1.3	+3.0	+23	+41	+57	+50	+2	+0.5	-1.8	+40	+2.7	-0.3	-0.4	+1.7	+0.1
Acc	43%	38%	60%	61%	64%	69%	70%	61%	49%	70%	36%	61%	53%	60%	60%	57%	51%

June 2023 Murray Grey BREEDPLAN

Traits Observed: GL,400WT,600WT(x2),SS,FAT,EMA,IMF

Purchaser: _____

Price: _____

LOT 9

WALLAWONG STATE WIDE S32 (PB)

IDENT: LEJ S32 DOB: 22/09/2021 COLOUR: Silver

WALLAWONG RIPSNOTER (PB)
S: WALLAWONG QUANTITY Q6 (PB)
BUNDALEER ANTOINETTE H48 (PB)

ONDIONG Z70 (PB)
D: ONDIONG JENNIFER 332ND (PB)
ONDIONG JENNIFER 198TH (PB)

\$ Index Values			
	VTI	SI	HGFSI
Value	\$41	\$34	\$56
Average	\$40	\$41	\$57



Comments: State Wide S32 is a moderately framed bull with a solid build and body depth. He comes from an impressive dam, who has produced several sale bulls and top selling heifers. A bull highly suited to producing well fleshed supermarket offspring.



Sire - WALLAWONG QUANTITY Q6



Dam - ONDIONG JENNIFER 332ND

	CE DIR	CE DTR	GL	BW	200	400	600	MCW	MILK	SS	DTC	CW	EMA	RIB	RUMP	RBY	IMF
EBV	+0.1	-0.1	-0.1	+3.5	+23	+35	+56	+68	+5	+0.5	-0.7	+37	+1.9	-0.3	-0.3	+1.3	0.0
Acc	35%	28%	39%	59%	61%	66%	67%	56%	44%	68%	25%	57%	45%	52%	52%	48%	39%

June 2023 Murray Grey BREEDPLAN

Traits Observed: 400WT,600WT(x2),SS,FAT,EMA,IMF

Purchaser: _____

Price: _____

LOT 10

WALLAWONG SCIENTIFIC S28 (GR0)

IDENT: LEJ S28 DOB: 19/09/2021 COLOUR: Grey

EF COMMANDO 1366^{PV}
S: HANSON PLATINUM BLACK P01^{PV} (AA)
MILLAH MURRAH ELA M80^{SV}

BOTTLESFORD KUDOS (PB) (AI)
D: WALLAWONG LOLITA Q33 (PB)
BUNDALEER LOLITA H78 (PB)

\$ Index Values			
	VTI	SI	HGFSI
Value	\$56	\$63	\$89
Average	\$40	\$41	\$57



Comments: Scientific S28 is a grading bull of significant depth and hindquarter squareness. An outcross to many of our commercial clients, he is a bull whose desirable physical attributes are backed by significant performance data. His growth EBVs are in the top 1-10% and his EMA EBV in the top 15%. A bull suited to producing efficient heavyweight domestic progeny.



Sire - HANSON PLATINUM BLACK P01



Dam - WALLAWONG LOLITA Q33

	CE DIR	CE DTR	GL	BW	200	400	600	MCW	MILK	SS	DTC	CW	EMA	RIB	RUMP	RBY	IMF
EBV	-	-	-1.6	+4.3	+33	+60	+89	+102	0	+0.6	-	+52	+2.5	-0.3	0.0	+1.3	+1.2
Acc	-	-	26%	44%	51%	59%	61%	48%	25%	64%	-	50%	40%	48%	48%	43%	29%

June 2023 Murray Grey BREEDPLAN

Traits Observed: 400WT,600WT(x2),SS,FAT,EMA

Purchaser: _____

Price: _____

LOT 11

WALLAWONG SMOOTH SAILING S12 (PB) (AI)

IDENT: LEJ S12 DOB: 26/08/2021 COLOUR: Silver

TULLIBARDINE JEOPARDY J14 (PB) (AI)
S: WALLAWONG MASTERCLASS M22 (PB)
BUNDALEER T.T. B33 (PB)

LINDSAY WEST W13 (PB)
D: WALLAWONG FORTUANA F3 (PB)
WALLAWONG FORTUANA 6TH (PB)

\$ Index Values			
	VTI	SI	HGFSI
Value	\$36	\$38	\$56
Average	\$40	\$41	\$57

Comments: Smooth Sailing S12 is a moderately framed bull in a very neat and attractive package. He displays very good structure and a thick, wide topline. From a dam that has longevity on her side and is still functional at 13yrs of age. By one of highest performing homebred sires in Masterclass M22, he combines an EMA EBV in the top 10%. A sound bull for improving structure and producing heavy domestic supermarket progeny.



Sire - WALLAWONG MASTERCLASS



Dam - WALLAWONG FORTUANA F3

	CE DIR	CE DTR	GL	BW	200	400	600	MCW	MILK	SS	DTC	CW	EMA	RIB	RUMP	RBY	IMF
EBV	-3.7	+0.1	-0.2	+4.0	+26	+36	+53	+50	+1	+1.1	-2.7	+35	+2.9	0.0	-0.1	+1.5	-0.3
Acc	36%	30%	59%	60%	62%	66%	67%	56%	44%	69%	29%	57%	47%	54%	54%	50%	42%

June 2023 Murray Grey BREEDPLAN

Traits Observed: GL,400WT,600WT(x2),SS,FAT,EMA,IMF

Purchaser: _____

Price: _____

LOT 12

WALLAWONG SALVATION S10 (PB) (AI)

IDENT: LEJ S10 DOB: 09/08/2021 COLOUR: Silver

AYR PARK HUGH H77 (GR2)
S: WOODBOURN PARINGA P49 (PB)
WOODBOURN MISS PANSY G26 (PB)

WALLAWONG RIPSNOTER (PB)
D: WALLAWONG T.T. P41 (PB)
BUNDALEER T.T. H60 (PB)

\$ Index Values			
	VTI	SI	HGFSI
Value	\$54	\$53	\$67
Average	\$40	\$41	\$57

Comments: Salvation S10 is a solidly built, muscular bull in a moderately framed package. His genetic potential is evident in his EBVs, with all growth traits in the top 10-15%. Suited to producing solid heavy domestic offspring.



Sire - WOODBOURN PARINGA P49



Dam - WALLAWONG T.T. P41

	CE DIR	CE DTR	GL	BW	200	400	600	MCW	MILK	SS	DTC	CW	EMA	RIB	RUMP	RBY	IMF
EBV	+0.5	-0.7	-1.6	+3.7	+33	+57	+71	+73	+9	-0.9	-1.0	+50	+1.8	-0.7	-0.8	+1.3	-0.1
Acc	35%	27%	57%	61%	63%	68%	68%	56%	40%	69%	27%	59%	48%	55%	55%	52%	45%

June 2023 Murray Grey BREEDPLAN

Traits Observed: GL,400WT,600WT(x2),SS,FAT,EMA,IMF

Purchaser: _____

Price: _____

LOT 13

WALLAWONG SALSA S13 (COMMERCIAL)

IDENT: LEJ S13 DOB: 27/08/2021 COLOUR: Grey

ORCADIA PARK TYCOON L082 (PB)
S: LINDSAY STARBRIGHT S117+97 (PB) (AI)
LINDSAY EDITH K15+90 (PB)

D: WALLAWONG COMMERCIAL FEMALE

Comments: Salsa S13 is a commercial bull that will continue to mature, grow and develop. He displays above average muscularity in a sound package. He is by the renowned carcase sire in Starbright S117, whose registered offspring have been used as stud sires through many enterprises over many years.



Sire - LINDSAY STARBRIGHT S117

Purchaser: _____

Price: _____

LOT 14

WALLAWONG SYNDICATE S24 (PB) (AI)

IDENT: LEJ S24 DOB: 06/09/2021 COLOUR: Silver

AYR PARK HUGH H77 (GR2)
S: WOODBOURN PARINGA P49 (PB)
WOODBOURN MISS PANSY G26 (PB)

BUNDALEER CASH FLOW Y6 (PB)
D: BUNDALEER LOLITA D24 (PB)
BUNDALEER LOLITA S125 (PB) (ET)

\$ Index Values			
	VTI	SI	HGFSI
Value	\$36	\$40	\$57
Average	\$40	\$41	\$57



Sire - WOODBOURN PARINGA P49

Comments: Syndicate S24 is a sound bull who displays a solid combination of muscularity and finish. He is moderately framed and from a dam who recently preg tested at 15 years of age. A good option for self replacing domestic herds.

	CE DIR	CE DTR	GL	BW	200	400	600	MCW	MILK	SS	DTC	CW	EMA	RIB	RUMP	RBV	IMF
EBV	-1.6	-1.9	-1.5	+3.2	+27	+40	+59	+60	+2	+1.0	-4.1	+34	+0.2	-0.2	-0.1	+0.5	+0.2
Acc	37%	29%	58%	65%	65%	69%	70%	59%	46%	70%	30%	60%	50%	59%	59%	55%	49%

June 2023 Murray Grey BREEDPLAN

Traits Observed: GL,400WT,600WT(x2),SS,FAT,EMA,IMF

Purchaser: _____

Price: _____

LOT 15

WALLAWONG SPOT ON S7 (PB)

IDENT: LEJ S7 DOB: 08/08/2021 COLOUR: Silver

EYLWARRA SANDS FALCON F33 (PB)
S: TULLIBARDINE JEOPARDY J14 (PB) (AI)
TULLIBARDINE KATIE E46 (PB) (AI)

LINDSAY FUSION F94 (PB)
D: WALLAWONG ANTOINETTE M52 (PB)
BUNDALEER ANTOINETTE H48 (PB)

\$ Index Values			
	VTI	SI	HGFSI
Value	\$34	\$34	\$57
Average	\$40	\$41	\$57

Comments: Spot On S7 is a moderately framed, quality sire. His dam has been a successful international donor and recently sold for \$10k into Queensland. He displays a solid data set, including being in the top 20% for EMA. Best used for producing domestic supermarket offspring.



Sire - TULLIBARDINE JEOPARDY J14



Dam - WALLAWONG ANTOINETTE M52

	CE DIR	CE DTR	GL	BW	200	400	600	MCW	MILK	SS	DTC	CW	EMA	RIB	RUMP	RBY	IMF
EBV	-2.1	-1.0	-0.5	+3.5	+22	+34	+57	+63	-1	+0.6	-1.7	+36	+2.5	-0.1	-0.2	+1.4	+0.1
Acc	42%	36%	51%	62%	65%	70%	70%	60%	50%	71%	31%	62%	51%	58%	58%	54%	47%

June 2023 Murray Grey BREEDPLAN

Traits Observed: 400WT,600WT(x2),SS,FAT,EMA,IMF

Purchaser: _____

Price: _____

LOT 16

WALLAWONG SCHOLAR S31 (PB) (AI)

IDENT: LEJ S31 DOB: 20/09/2021 COLOUR: Silver

AYR PARK HUGH H77 (GR2)
S: WOODBOURN PARINGA P49 (PB)
WOODBOURN MISS PANSY G26 (PB)

GNOLEDA ZAC (PB)
D: WALLAWONG EMERALD E66 (PB)
SPRINGWELL EMERALD U62 (PB)

\$ Index Values			
	VTI	SI	HGFSI
Value	\$28	\$30	\$47
Average	\$40	\$41	\$57

Comments: Scholar S31 is a bull with considerable pedigree. His dam has been an international donor and a half maternal brother sold in last year's sale for \$12k. His dam recently preg tested at 14 years old. A hassle free domestically orientated bull that will continue to develop into a useful sire.



Sire - WOODBOURN PARINGA P49



Dam - WALLAWONG EMERALD E66

	CE DIR	CE DTR	GL	BW	200	400	600	MCW	MILK	SS	DTC	CW	EMA	RIB	RUMP	RBY	IMF
EBV	-2.4	-1.7	-0.8	+3.5	+25	+41	+59	+69	+5	+0.1	-2.3	+34	-0.2	0.0	0.0	0.0	+0.1
Acc	37%	30%	58%	62%	64%	68%	68%	58%	45%	70%	30%	59%	50%	58%	58%	54%	47%

June 2023 Murray Grey BREEDPLAN

Traits Observed: GL,400WT,600WT(x2),SS,FAT,EMA,IMF

Purchaser: _____

Price: _____

LOT 17

WALLAWONG SOUTHERN CROSS S3 (PB)

IDENT: LEJ S3 DOB: 31/07/2021 COLOUR: Silver

AYR PARK HUGH H77 (GR2)
S: **WOODBURN PARINGA P49 (PB)**
WOODBURN MISS PANSY G26 (PB)

WATERMILL DRIFTER F39 (PB)
D: **THE ULTIMATE CHERIE H17 (PB)**
MADONNA DOWNS CHERIE (PB)



Sire - WOODBURN PARINGA P49

Comments: Southern Cross S3 is a sound bull in a moderate package. He displays a good combination of muscularity and softness. He is best suited to producing middleweight domestic offspring.

\$ Index Values			
	VTI	SI	HGFSI
Value	\$36	\$38	\$53
Average	\$40	\$41	\$57

	CE DIR	CE DTR	GL	BW	200	400	600	MCW	MILK	SS	DTC	CW	EMA	RIB	RUMP	RBY	IMF
EBV	-2.1	-	-1.1	+4.5	+28	+46	+63	+64	+6	+0.3	-	+37	+0.8	-0.5	-0.7	+0.8	0.0
Acc	31%	-	41%	60%	61%	65%	66%	54%	37%	68%	-	56%	45%	53%	53%	49%	41%

June 2023 Murray Grey BREEDPLAN

Traits Observed: 400WT,600WT(x2),SS,FAT,EMA,IMF

Purchaser: _____

Price: _____

Wallawong Premium Beef are honoured and proud to be recognised in the
Top 100 Producers 2021 by Meat Standards Australia



COLLECT YOUR VALUABLE LIVESTOCK

THE CHEAPEST INSURANCE MONEY CAN BUY

Department of Agriculture & Water Resources audited
semen and embryo collection centres

Semen Collection Services

Complete embryo transfer services

- Export & Domestic donor centres
- On farm ET Services in Mobile Laboratory- Servicing the areas of Southern QLD, NSW & NE VIC

We regularly IMPORT & EXPORT semen & embryos in partnership with Alta Genetics Canada & Hawkeye Breeders USA

Artificial Insemination programs and advice

- Veterinary Reproduction Medicines
- AI supplies
- Semen
- Technicians

Liquid Nitrogen Sales

YOUR EXPERT PARTNER, WITH EXPERT ADVICE



HOLBROOK
BREEDERS
AUSTRALIA

Reproducing Excellence

LOT 18

WALLAWONG SPICE OF LIFE S120 ^{PV}

IDENT: LEJ21S120 DOB: 03/08/2021 REGISTER: APR

EF COMMANDO 1366^{PV}
S: HANSON PLATINUM BLACK P01^{PV}
MILLAH MURRAH ELA M80^{SV}

PRIME LEGEND L77^{SV}
D: BURENDA DENILQUIN P5^{SV}
BURENDA DENILQUIN M90[#]

\$ Index Values		
	ABI	ABLFCI
EBV	\$199	\$338
Perc	52	56



Sire - HANSON PLATINUM BLACK P01

Genetic Status: AMFU,CAFU,DD1%,NH2%

TACE	CE DIR	CE DTR	GL	BW	200	400	600	MCW	MILK	DTC	SS	CW	EMA	RIB	RUMP	RBY	IMF	NFI-F
EBV	+2.8	+4.1	-5.6	+4.9	+49	+87	+110	+86	+18	-6.1	+2.3	+57	+2.0	+0.6	+1.2	-0.1	+1.6	+0.19
Acc	49%	40%	63%	62%	64%	61%	65%	60%	52%	33%	65%	54%	53%	55%	55%	50%	57%	45%
Per	50	38	36	69	56	60	66	72	39	16	40	76	92	34	23	81	64	51

July 2023 TransTasman Angus Cattle Evaluation

Traits Observed: 200WT,600WT(x2),SC,Scan(EMA,Rib,Rump,IMF)

Purchaser: _____ Price: _____

LOT 19

WALLAWONG SHOOTING STAR S178 ^{PV}

IDENT: LEJ21S178 DOB: 28/07/2021 REGISTER: HBR

COONAMBLE HECTOR H249^{SV}
S: TEXAS NO REGRETS N046^{PV}
TEXAS UNDINE H647^{SV}

ABBOTT EMPEROR E48^{SV}
D: ABBOTT ACE H72^{SV}
ABBOTT ACE Z1[#]

\$ Index Values		
	ABI	ABLFCI
EBV	\$180	\$319
Perc	72	69



Sire - TEXAS NO REGRETS N046

Dam - ABBOTT ACE H72

Genetic Status: AMFU,CAFU,DDFU,NHFU

TACE	CE DIR	CE DTR	GL	BW	200	400	600	MCW	MILK	DTC	SS	CW	EMA	RIB	RUMP	RBY	IMF	NFI-F
EBV	+3.2	+1.3	-4.7	+4.0	+46	+85	+122	+108	+7	-2.4	+1.1	+68	+10.8	-0.1	-0.3	+1.6	+0.6	+0.09
Acc	54%	43%	66%	67%	69%	69%	73%	66%	59%	36%	73%	60%	57%	59%	59%	54%	59%	46%
Per	47	67	51	48	67	66	39	36	99	93	84	46	9	50	49	4	88	38

July 2023 TransTasman Angus Cattle Evaluation

Traits Observed: 200WT,600WT(x2),SC,Scan(EMA,Rib,Rump,IMF)

Purchaser: _____ Price: _____

LOT 20

WALLAWONG SUDDEN IMPACT S169 ^{PV}

IDENT: LEJ21S169 DOB: 28/07/2021 REGISTER: HBR

ATAHUA FREEDOM 609-10[#]
S: NAMPARA LIBERTY L21^{SV}
NAMPARA H65[#]

B C MARATHON 7022[#]
D: STONEY POINT XTRA FOCUSED E159^{SV}
STONEY POINT XTRA FOCUSED X53[#]

\$ Index Values		
	ABI	ABLFCI
EBV	\$128	\$272
Perc	96	89



Comments: Sudden Impact S169 will be sure to live up to his name. A powerful, deep bodied, sire that stands on very good feet and legs. There is a lot to like, including his pedigree, being by an \$85k sale topper and from a very high quality donor female. A bull with high Growth EBVs and top 2% for yield and top 10% for Feed Efficiency.



Sire - NAMPARA LIBERTY L21



Dam - STONEY POINT XTRA FOCUSED

Genetic Status: AMFU,CAFU,DDFU,NHFU

TACE	CE DIR	CE DTR	GL	BW	200	400	600	MCW	MILK	DTC	SS	CW	EMA	RIB	RUMP	RBY	IMF	NFI-F
EBV	-5.1	-1.3	-3.8	+7.8	+55	+95	+127	+146	+12	-2.9	+2.2	+68	+4.8	-2.4	-2.5	+1.8	-1.2	-0.21
Acc	57%	45%	70%	69%	70%	69%	74%	68%	63%	39%	74%	63%	61%	61%	63%	58%	64%	54%
Per	92	85	66	98	25	35	28	4	85	89	44	44	67	92	85	3	99	10

July 2023 TransTasman Angus Cattle Evaluation

Traits Observed: 200WT,600WT(x2),SC,Scan(EMA,Rib,Rump,IMF)

Purchaser: _____

Price: _____

LOT 21

WALLAWONG SOUTHERN STAR S176 ^{PV}

IDENT: LEJ21S176 DOB: 28/07/2021 REGISTER: HBR

WMR TIMELESS 458[#]
S: GDAR REGULATOR 364^{PV}
GDAR BLACKCAP LADY 071[#]

JINDRA 3RD DIMENSION^{PV}
D: PREMIER LOWAN L24^{PV}
ST PAULS 0699 LOWAN B207^{PV}

\$ Index Values		
	ABI	ABLFCI
EBV	\$198	\$346
Perc	53	49



Comments: Southern Star S176 is another deep bodied, high volume sire. He combines this with above average phenotypic muscling and large testicles. His dam is an ultra impressive donor of significant size and presence. A half maternal brother has been retained and is part of the AA benchmarking program. A very useful bull that would be best suited to southern production enterprises as he does exhibit more hair than the other bulls.



Sire - GDAR REGULATOR 364



Dam - PREMIER LOWAN L24

Genetic Status: AMFU,CAFU,DDFU,NHFU

TACE	CE DIR	CE DTR	GL	BW	200	400	600	MCW	MILK	DTC	SS	CW	EMA	RIB	RUMP	RBY	IMF	NFI-F
EBV	-1.0	+4.5	-5.5	+5.6	+57	+94	+121	+110	+10	-5.6	+1.6	+67	+1.7	-0.5	-0.3	+0.0	+1.9	-0.25
Acc	57%	46%	65%	67%	70%	70%	73%	68%	60%	40%	73%	63%	59%	61%	61%	57%	60%	47%
Per	78	34	37	81	18	38	41	33	93	25	68	49	93	60	49	77	55	8

July 2023 TransTasman Angus Cattle Evaluation

Traits Observed: 200WT,600WT(x2),SC,Scan(EMA,Rib,Rump,IMF)

Purchaser: _____

Price: _____

LOT 22

WALLAWONG STATE OF THE ART S131^{SV}

IDENT: LEJ21S131 DOB: 28/08/2021 REGISTER: HBR

TE MANIA BERKLEY B1^{PV}
S: AYRVALE GENERAL G18^{PV}
AYRVALE EASE E3^{PV}

ABBOTT DOMINATOR G44^{SV}
D: ABBOTT VICTORIA K37^{SV}
ABBOTT VICTORIA H43[#]

\$ Index Values		
	ABI	ABLFCI
EBV	\$237	\$427
Perc	13	4



Comments: State Of The Art S131, is simply a profit making sire. He displays all the characteristics that modern day producers are looking for; a deep body, thick, full eye muscle, outstanding temperament, great pedigree and solid EBVs. He was a select mating over one of our best donor cows, and includes EBVs of note; including positive calving ease, top 5% for 600D Weight, top 5% for EMA and maintaining near breed average Fat EBVs. A bull that should attract significant Northern interest, as he also includes a Coat Type EBV in the top 5%. Don't overlook this bull as a very valuable addition to your 2023 sire battery.



Dam - ABBOTT VICTORIA K37

Genetic Status: AMFU,CAFU,DDFU,NHFU

TACE	CE DIR	CE DTR	GL	BW	200	400	600	MCW	MILK	DTC	SS	CW	EMA	RIB	RUMP	RBY	IMF	NFI-F
EBV	+5.5	+3.3	-6.2	+4.0	+54	+102	+150	+139	+18	-6.3	+2.7	+84	+12.0	+0.5	-0.5	+1.1	+1.9	+0.64
Acc	59%	52%	82%	67%	69%	72%	74%	68%	63%	45%	74%	64%	60%	62%	62%	59%	63%	54%
Per	27	47	27	48	32	19	5	6	46	12	26	9	5	36	53	14	55	93

July 2023 TransTasman Angus Cattle Evaluation

Traits Observed: GL,400WT,600WT,SC,Scan(Rib,Rump,IMF)

Purchaser: _____

Price: _____

LOT 23

WALLAWONG STOCK MARKET S144^{SV}

IDENT: LEJ21S144 DOB: 12/09/2021 REGISTER: HBR

EF COMMANDO 1366^{PV}
S: HANSON PLATINUM BLACK P01^{PV}
MILLAH MURRAH ELA M80^{SV}

ABBOTT PERFORMER E32^{SV}
D: WALLAWONG DUSTY N44^{SV}
ABBOTT DUSTY G49[#]

\$ Index Values		
	ABI	ABLFCI
EBV	\$199	\$342
Perc	52	52



Comments: Stock Market S144 is an active sire that displays a good combination of muscularity, style and softness. He does this while possessing sound EBVs and smooth shoulders. A Coat Type EBV in the top 22% is also of value. Maternal half brothers have sold to \$16k.



Sire - HANSON PLATINUM BLACK P01



Dam - WALLAWONG DUSTY N44

Genetic Status: AMFU,CAFU,DDFU,NHFU

TACE	CE DIR	CE DTR	GL	BW	200	400	600	MCW	MILK	DTC	SS	CW	EMA	RIB	RUMP	RBY	IMF	NFI-F
EBV	+0.0	+2.1	-4.1	+6.6	+56	+97	+130	+110	+20	-4.4	+1.3	+77	+6.2	-0.3	-0.4	+0.7	+0.8	+0.08
Acc	47%	39%	56%	58%	63%	64%	70%	62%	51%	34%	71%	57%	52%	55%	55%	50%	53%	43%
Per	72	60	61	92	22	29	24	33	29	57	78	21	49	55	51	34	84	37

July 2023 TransTasman Angus Cattle Evaluation

Traits Observed: 600WT(x2),SC,Scan(EMA,Rib,Rump,IMF)

Purchaser: _____

Price: _____

LOT 24

WALLAWONG SET THE STAGE S111 ^{PV}

IDENT: LEJ21S111 DOB: 21/06/2021 REGISTER: APR

EF COMMANDO 1366^{PV}
S: HANSON PLATINUM BLACK P01^{PV}
MILLAH MURRAH ELA M80^{SV}

SYDGEN BLACK PEARL 2006^{PV}
D: BURENDA DAISY P60^{SV}
BURENDA DAISY D28[#]

\$ Index Values		
	ABI	ABLFCI
EBV	\$200	\$314
Perc	51	72



Comments: Set The Stage S111 is a natural calf from a very commercially relevant donor female who always produces a top calf. He is a solidly built bull with good muscularity. Sound all-round EBVs, including top 10% for Coat Type, also make him a valuable asset to enterprises supplying the heavy domestic or feeder markets in Northern Australia.



Sire - HANSON PLATINUM BLACK P01 Dam - BURENDA DAISY P60

Genetic Status: AMFU,CAFU,DDFU,NHFU

TACE	CE DIR	CE DTR	GL	BW	200	400	600	MCW	MILK	DTC	SS	CW	EMA	RIB	RUMP	RBY	IMF	NFI-F
EBV	-0.8	+3.3	-3.5	+5.5	+48	+80	+102	+78	+19	-4.9	-0.6	+59	+7.6	-0.8	-1.3	+0.9	+1.8	-0.17
Acc	52%	44%	64%	63%	65%	62%	66%	62%	55%	38%	66%	56%	55%	57%	57%	52%	58%	47%
Per	76	47	70	79	58	78	80	83	36	43	99	72	32	67	68	23	58	12

July 2023 TransTasman Angus Cattle Evaluation

Traits Observed: 200WT,600WT(x2),SC,Scan(EMA,Rib,Rump,IMF)

Purchaser: _____

Price: _____

LOT 25

WALLAWONG SUPERMAN S168 (COMMERCIAL)

IDENT: LEJ21S168 DOB: 28/07/2021

ATAHUA FREEDOM 609-10[#]
S: NAMPARA LIBERTY L21^{SV}
NAMPARA H65[#]

D: WALLAWONG COMMERCIAL
FEMALE



Comments: Superman S168 is a commercial bull by the sale topping (\$85k) sire N. Liberty L21. His dam was a very well structured commercial cow. He is a bull that displays a great sire's outlook, including a strong head and added body length.



Sire - NAMPARA LIBERTY L21

Purchaser: _____

Price: _____

LOT 26

WALLAWONG SYDNEY S123 ^{SV}

IDENT: LEJ21S123 DOB: 26/08/2021 REGISTER: HBR

BOWMONT KING K306^{PV}
S: KNOWLA NOBLEMAN N127^{SV}
KNOWLA LOWAN K49[#]

ABBOTT EMPEROR E48^{SV}
D: WALLAWONG BARUNAH N46[#]
ABBOTT BARUNAH K54[#]

\$ Index Values

	ABI	ABLFCI
EBV	\$213	\$368
Perc	35	32



Comments: Sydney S123 is a standout for calving ease, top 9%, and would be highly suited to heifer matings. He offers low birthweight, top 12%, while still maintaining well above average EMA, top 23%, and IMF, top 43%. Half maternal half brothers have sold to \$14k. A very versatile bull well suited to self replacing herds focussed on calving ease.



Sire - KNOWLA NOBLEMAN N127



Dam - WALLAWONG BARUNAH N46

Genetic Status: AMFU,CAFU,DDFU,NHFU

TACE	CE DIR	CE DTR	GL	BW	200	400	600	MCW	MILK	DTC	SS	CW	EMA	RIB	RUMP	RBY	IMF	NFI-F
EBV	+8.1	+4.0	-8.8	+2.0	+49	+87	+115	+99	+11	-4.1	+2.0	+67	+8.6	+0.5	-0.2	+0.9	+2.3	+0.25
Acc	49%	38%	81%	64%	65%	66%	72%	63%	50%	34%	72%	57%	53%	56%	56%	51%	53%	41%
Per	9	40	5	13	56	61	55	52	91	66	52	49	23	36	47	23	43	59

July 2023 TransTasman Angus Cattle Evaluation

Traits Observed: GL,600WT(x2),SC,Scan(EMA,Rib,Rump,IMF)

Purchaser: _____

Price: _____

LOT 27

WALLAWONG SUPERLATIVE S138 ^{SV}

IDENT: LEJ21S138 DOB: 04/09/2021 REGISTER: HBR

COONAMBLE HECTOR H249^{SV}
S: TEXAS NO REGRETS N046^{PV}
TEXAS UNDINE H647^{SV}

ABBOTT PERFORMER E32^{SV}
D: ABBOTT ACE K71^{SV}
ABBOTT ACE B7[#]

\$ Index Values

	ABI	ABLFCI
EBV	\$204	\$347
Perc	46	48



Comments: Superlative S138 is another high growth, well muscled T. No Regrets N046 (\$32k) son. He is phenotypically long bodied and easy finishing. These traits are supported by his EBVs, including being in the top 24% for EMA, top 7-13% for Fat. Half maternal brothers have sold to \$10k. A very good bull for the production of heavy domestic offspring.



Sire - TEXAS NO REGRETS N046



Dam - ABBOTT ACE K71

Genetic Status: AMFU,CAFU,DD1%,NH2%

TACE	CE DIR	CE DTR	GL	BW	200	400	600	MCW	MILK	DTC	SS	CW	EMA	RIB	RUMP	RBY	IMF	NFI-F
EBV	-0.7	-2.3	-3.3	+5.7	+58	+97	+134	+116	+10	-3.6	+0.9	+85	+8.5	+1.9	+3.0	+1.0	-0.3	-0.17
Acc	53%	43%	83%	67%	68%	69%	74%	67%	59%	38%	74%	61%	57%	60%	60%	56%	58%	47%
Per	76	90	73	83	18	31	18	25	95	78	88	8	24	13	7	18	98	12

July 2023 TransTasman Angus Cattle Evaluation

Traits Observed: GL,600WT(x2),SC,Scan(EMA,Rib,Rump,IMF)

Purchaser: _____

Price: _____

LOT 28

WALLAWONG SUPREME S171^{PV}

IDENT: LEJ21S171 DOB: 30/07/2021 REGISTER: HBR

COONAMBLE HECTOR H249^{SV}
S: MILLAH MURRAH HECTOR M153^{PV}
MILLAH MURRAH PRUE H113^{PV}

PATHFINDER DIRECTION C564^{PV}
D: WOODBOURN QUEEN F24[#]
WOODBOURN QUEEN B8[#]

\$ Index Values		
	ABI	ABLFci
EBV	\$166	\$303
Perc	82	78



Comments: Supreme S171 displays excellent body length and frame score. He will continue to develop into a very good sire. His sire sold for \$40k, while his dam has been one of our favourite donors, with daughters selling to \$17k and sons to \$14k. In addition to his pedigree, his EBVs show an easy calving sire with positive Calving Ease EBV, top 22%, and Birthweight EBV, top 29%. The inclusion of positive Fat EBVs, top 7-9%, only add to his appeal and value. A great sire for self replacing herds in Northern Australia with a Coat Score EBV in the top 15%. Note that he does have a slight blue scar on his left eye, not detrimental to his function.



Dam - WOODBOURN QUEEN F24

Genetic Status: AMFU,CAFU,DDFU,NHFU

TACE	CE DIR	CE DTR	GL	BW	200	400	600	MCW	MILK	DTC	SS	CW	EMA	RIB	RUMP	RBY	IMF	NFI-F
EBV	+6.1	+4.7	-1.8	+3.1	+39	+75	+95	+86	+11	-4.2	+2.1	+50	+5.1	+2.5	+2.6	+0.1	+1.6	+0.31
Acc	51%	42%	63%	63%	66%	65%	70%	62%	55%	34%	70%	57%	52%	55%	55%	49%	56%	45%
Per	22	32	89	29	91	88	88	72	92	63	48	90	64	7	9	71	64	67

July 2023 TransTasman Angus Cattle Evaluation

Traits Observed: 200WT,600WT(x2),SC,Scan(EMA,Rib,Rump,IMF)

Purchaser: _____

Price: _____

LOT 29

WALLAWONG STACK THE DECK S121^{SV}

IDENT: LEJ21S121 DOB: 19/08/2021 REGISTER: HBR

BOWMONT KING K306^{PV}
S: KNOWLA NOBLEMAN N127^{SV}
KNOWLA LOWAN K49[#]

S A V BISMARCK 5682[#]
D: ABBOTT KIWI G27[#]
GLENCAIRN KIWI Y8[#]

\$ Index Values		
	ABI	ABLFci
EBV	\$218	\$378
Perc	30	24



Comments: Stack The Deck in your favour with S121. Another calving ease sire with a great combination of muscularity, softness and smooth shoulders. Attractive EBVs also indicating above average Growth, top 30%, and EMA, top 25%. Best used as a versatile sire in a self replacing herd focussed on heavy domestic production.



Sire - KNOWLA NOBLEMAN N127



Dam - ABBOTT KIWI G27

Genetic Status: AMFU,CAFU,DD2%,NHFU

TACE	CE DIR	CE DTR	GL	BW	200	400	600	MCW	MILK	DTC	SS	CW	EMA	RIB	RUMP	RBY	IMF	NFI-F
EBV	+5.2	+0.6	-8.7	+3.7	+54	+97	+126	+115	+11	-4.3	+1.9	+73	+8.4	+0.0	-0.6	+0.8	+2.4	+0.15
Acc	51%	40%	82%	66%	67%	67%	72%	65%	53%	35%	73%	58%	54%	57%	57%	53%	55%	42%
Per	29	73	6	41	31	29	30	26	91	60	56	29	25	48	55	28	41	46

July 2023 TransTasman Angus Cattle Evaluation

Traits Observed: GL,600WT(x2),SC,Scan(EMA,Rib,Rump,IMF)

Purchaser: _____

Price: _____

LOT 30

WALLAWONG SLOT CAR S167^{PV}

IDENT: LEJ21S167 DOB: 28/07/2021 REGISTER: HBR

COONAMBLE HECTOR H249^{SV}
S: MILLAH MURRAH HECTOR M153^{PV}
MILLAH MURRAH PRUE H113^{PV}

ABBOTT EMPEROR E48^{SV}
D: ABBOTT ACE H72^{SV}
ABBOTT ACE Z1[#]

\$ Index Values		
	ABI	ABLFCI
EBV	\$172	\$301
Perc	78	79



Sire - MILLAH MURRAH HECTOR M153 Dam - ABBOTT ACE H72

Genetic Status: AMFU,CAFU,DDFU,NHFU

TACE	CE DIR	CE DTR	GL	BW	200	400	600	MCW	MILK	DTC	SS	CW	EMA	RIB	RUMP	RBY	IMF	NFI-F
EBV	+5.4	+4.6	-3.1	+1.8	+35	+73	+98	+80	+15	-4.0	+1.4	+53	+8.5	+0.1	+0.0	+1.2	+1.3	+0.07
Acc	51%	42%	63%	64%	66%	65%	71%	63%	55%	34%	71%	57%	53%	55%	55%	50%	56%	45%
Per	28	33	76	11	96	91	85	81	66	68	75	85	24	45	44	11	72	35

July 2023 TransTasman Angus Cattle Evaluation

Traits Observed: 200WT,600WT(x2),SC,Scan(EMA,Rib,Rump,IMF)

Purchaser: _____

Price: _____

LOT 31

WALLAWONG SALESMAN S156^{SV}

IDENT: LEJ21S156 DOB: 23/09/2021 REGISTER: HBR

EF COMMANDO 1366^{PV}
S: HANSON PLATINUM BLACK P01^{PV}
MILLAH MURRAH ELA M80^{SV}

ABBOTT EMPEROR E48^{SV}
D: WALLAWONG YELLOWSTONE N52[#]
ABBOTT YELLOWSTONE K67[#]

\$ Index Values		
	ABI	ABLFCI
EBV	\$182	\$323
Perc	69	66



Sire - HANSON PLATINUM BLACK P01 Dam - WALLAWONG YELLOWSTONE N52

Genetic Status: AMFU,CAFU,DDFU,NHFU

TACE	CE DIR	CE DTR	GL	BW	200	400	600	MCW	MILK	DTC	SS	CW	EMA	RIB	RUMP	RBY	IMF	NFI-F
EBV	+2.3	+3.5	-4.4	+5.7	+51	+87	+120	+106	+16	-3.9	+1.4	+65	+5.5	-0.5	-0.9	+0.7	+1.2	+0.05
Acc	46%	38%	53%	57%	62%	63%	69%	61%	49%	32%	70%	55%	48%	52%	52%	47%	49%	38%
Per	55	45	56	83	47	61	43	40	55	71	75	52	58	60	61	34	75	33

July 2023 TransTasman Angus Cattle Evaluation

Traits Observed: 600WT(x2),SC,Scan(EMA,Rib,Rump,IMF)

Purchaser: _____

Price: _____

LOT 32

WALLAWONG SUPER NATURAL S137

IDENT: LEJ21S137 DOB: 02/09/2021 REGISTER: HBR

MILWILLAH GATSBY G279^{PV}
S: BOWMONT KING K306^{PV}
LANDFALL FEARLESS D58^{SV}

ABBOTT PERFORMER E32^{SV}
D: WALLAWONG KIWI N53[#]
ABBOTT KIWI G27[#]

\$ Index Values		
	ABI	ABLFCI
EBV	\$199	\$323
Perc	52	66



Sire - BOWMONT KING K306

Genetic Status: AMFU,CAFU,DDFU,NHFU

Comments: Super Natural S137 is a sound structured, smooth shouldered, moderately framed bull. He shows above average muscularity, including an EMA EBV in the top 20% and a Yield EBV in the top 7%. Well suited as an efficient producer of quality domestic offspring.

TACE	CE DIR	CE DTR	GL	BW	200	400	600	MCW	MILK	DTC	SS	CW	EMA	RIB	RUMP	RBY	IMF	NFI-F
EBV	-2.2	-4.2	-3.9	+5.7	+52	+86	+115	+102	+8	-4.5	+1.2	+73	+9.0	-1.5	-2.3	+1.4	+2.2	+0.29
Acc	55%	46%	82%	64%	66%	67%	72%	65%	59%	40%	73%	62%	58%	60%	60%	57%	61%	53%
Per	83	95	64	83	38	64	55	45	98	54	81	29	20	81	82	7	46	64

July 2023 TransTasman Angus Cattle Evaluation

Traits Observed: GL,600WT(x2),SC,Scan(EMA,Rib,Rump,IMF)

Purchaser: _____

Price: _____

LOT 33

WALLAWONG SUPER CONDUCTOR S139 ^{PV}

IDENT: LEJ21S139 DOB: 07/09/2021 REGISTER: HBR

BOWMONT KING K306^{PV}
S: KNOWLA NOBLEMAN N127^{SV}
KNOWLA LOWAN K49[#]

LANDFALL MODEST F72^E
D: WALLAWONG ALICE M7^{SV}
WOODBURN ALICE X32[#]

\$ Index Values		
	ABI	ABLFCI
EBV	\$185	\$338
Perc	67	55



Sire - KNOWLA NOBLEMAN N127



Dam - WALLAWONG ALICE M7

Genetic Status: AMFU,CAFU,DDFU,NHFU

Comments: Super Conductor S139 is a square set, easy doing, moderately framed sire. He offers great calving ease and low birthweight, including a Calving Ease EBV in the top 10% and a Birthweight EBV in the top 20%. As with many of the sires he also exhibits sound carcase characteristics, having an EMA EBV above breed average and an IMF EBV in the top 35%. A great all-round bull from a big volumed donor female.

TACE	CE DIR	CE DTR	GL	BW	200	400	600	MCW	MILK	DTC	SS	CW	EMA	RIB	RUMP	RBY	IMF	NFI-F
EBV	+8.0	+0.6	-8.9	+2.6	+50	+86	+114	+111	+9	-3.6	+2.4	+68	+6.4	-0.6	-1.9	+0.7	+2.6	+0.01
Acc	53%	41%	82%	67%	68%	68%	73%	65%	54%	34%	73%	59%	56%	58%	58%	53%	59%	46%
Per	10	73	5	20	51	63	56	32	97	78	37	46	47	62	77	34	35	28

July 2023 TransTasman Angus Cattle Evaluation

Traits Observed: GL,600WT(x2),SC,Scan(EMA,Rib,Rump,IMF)

Purchaser: _____

Price: _____

LOT 34

WALLAWONG STAGE COACH S132

IDENT: LEJ21S132 DOB: 28/08/2021 REGISTER: HBR

MILWILLAH GATSBY G279^{PV}
S: **BOWMONT KING K306^{PV}**
LANDFALL FEARLESS D58^{SV}

ABBOTT PERFORMER E32^{SV}
D: **ABBOTT VICTORIA K61[#]**
GLENCAIRN VICTORIA Y15[#]

\$ Index Values		
	ABI	ABLFCI
EBV	\$207	\$340
Perc	42	54



Comments: Stage Coach S132 is set to carry your herd in the right direction. He is a smoothly made bull with excellent physical sleek hair type. Another sire with a desirable combination of carcass characteristics, being top 37% for EMA and top 43% for IMF. He is from a dam that has produced daughters that have sold to \$9k. A good option for those looking for a heat tolerant moderately framed sire.



Sire - BOWMONT KING K306



MATERNAL HALF SISTER

Genetic Status: AMFU,CAFU,DDFU,NHFU

TACE	CE DIR	CE DTR	GL	BW	200	400	600	MCW	MILK	DTC	SS	CW	EMA	RIB	RUMP	RBY	IMF	NFI-F
EBV	-2.8	-4.2	-3.8	+5.7	+55	+90	+118	+107	+10	-5.5	+1.0	+81	+7.2	-0.4	-1.0	+0.9	+2.3	+0.39
Acc	54%	45%	64%	66%	67%	66%	66%	64%	60%	42%	61%	61%	60%	62%	62%	58%	62%	54%
Per	86	95	66	83	27	51	47	38	94	27	86	13	37	57	62	23	43	76

July 2023 TransTasman Angus Cattle Evaluation

Traits Observed: 400WT,600WT,SC,Scan(EMA,Rib,Rump,IMF)

Purchaser: _____

Price: _____

LOT 35

WALLAWONG STREETS AHEAD S160 ^{PV}

IDENT: LEJ21S160 DOB: 29/09/2021 REGISTER: HBR

EF COMMANDO 1366^{PV}
S: **HANSON PLATINUM BLACK P01^{PV}**
MILLAH MURRAH ELA M80^{SV}

ABBOTT EMPEROR E48^{SV}
D: **ABBOTT ACE H72^{SV}**
ABBOTT ACE Z1[#]

\$ Index Values		
	ABI	ABLFCI
EBV	\$188	\$317
Perc	63	70



Comments: If you are looking to put your herd Streets Ahead of the opposition, then S160 is for you. One of our favourite bulls for his great topline and full convex hindquarter. A moderate Birthweight EBV combines with a very good EMA EBV in the top 11%. Also of note is his excellent pedigree, being from a highly respected donor female who has sold sons to \$14k. Coat Type EBV in the top 13% is also a highly sought after attribute. A quality bull well worth a second inspection.



Sire - HANSON PLATINUM BLACK P01



Dam - ABBOTT ACE H72

Genetic Status: AMFU,CAFU,DDFU,NHFU

TACE	CE DIR	CE DTR	GL	BW	200	400	600	MCW	MILK	DTC	SS	CW	EMA	RIB	RUMP	RBY	IMF	NFI-F
EBV	+2.7	+3.3	-3.8	+4.1	+42	+79	+106	+87	+15	-4.1	+1.1	+56	+10.5	-0.6	-1.1	+1.5	+1.1	+0.36
Acc	50%	40%	60%	62%	65%	68%	71%	63%	53%	33%	71%	57%	52%	55%	55%	50%	55%	43%
Per	51	47	66	51	82	81	73	72	70	66	84	79	11	62	64	5	77	73

July 2023 TransTasman Angus Cattle Evaluation

Traits Observed: GL,600WT(x2),SC,Scan(EMA,Rib,Rump,IMF)

Purchaser: _____

Price: _____

LOT 36

WALLAWONG STERLING S164^{SV}

IDENT: LEJ21S164 DOB: 05/10/2021 REGISTER: HBR

EF COMMANDO 1366^{PV}
S: HANSON PLATINUM BLACK P01^{PV}
MILLAH MURRAH ELA M80^{SV}

MILLAH MURRAH CONVERSION L324^{SV}
D: WALLAWONG VICTORIA P12^{SV}
ABBOTT VICTORIA K37^{SV}

Comments: Sterling S164 offers an great combination of muscularity and softness in a middle of the road package. His dam was one of our young guns, recently selling for \$12k and heading toward donor duties. He possesses Growth and EMA EBVs well above breed average. His dam was a sleek coated individual and he also has a Coat Type EBV in the top 16%. A good option of Northern production systems focussing on feeder steers.



\$ Index Values		
	ABI	ABLFCI
EBV	\$190	\$345
Perc	61	50



Dam - WALLAWONG VICTORIA P12

Genetic Status: AMFU,CAFU,DDFU,NHFU

TACE	CE DIR	CE DTR	GL	BW	200	400	600	MCW	MILK	DTC	SS	CW	EMA	RIB	RUMP	RBV	IMF	NFI-F
EBV	-3.1	+1.5	-4.3	+7.3	+58	+106	+144	+132	+19	-4.2	+2.4	+78	+7.1	-1.5	-1.8	+0.6	+1.5	+0.15
Acc	47%	38%	61%	59%	63%	67%	70%	62%	49%	32%	70%	56%	50%	54%	54%	48%	53%	41%
Per	87	65	57	96	17	12	8	10	34	63	37	18	38	81	76	40	67	46

July 2023 TransTasman Angus Cattle Evaluation

Traits Observed: 400WT,600WT,SC,Scan(EMA,Rib,Rump,IMF)

Purchaser: _____

Price: _____

LOT 37

WALLAWONG SHOWCASE S159[#]

IDENT: LEJ21S159 DOB: 23/09/2021 REGISTER: HBR

EF COMMANDO 1366^{PV}
S: HANSON PLATINUM BLACK P01^{PV}
MILLAH MURRAH ELA M80^{SV}

ABBOTT MAXIMUS A60^{PV}
D: ABBOTT PATRICIA E44[#]
GLENCAIRN KIWI Y8[#]

\$ Index Values		
	ABI	ABLFCI
EBV	\$175	\$297
Perc	75	81

Comments: Showcase S159 is a bull that shows sound depth of body and is from a female with great longevity. His dam is a valued donor who at 14yrs has sold \$15k worth of embryos in the last 12 months. Another bull with above average muscularity as highlighted by his EMA EBV in the top 35%. A good Northern option with a Coat Type EBV also in the top 18%.



Sire - HANSON PLATINUM BLACK P01



Dam - ABBOTT PATRICIA E44

Genetic Status: AMFU,CAFU,DDFU,NHFU

TACE	CE DIR	CE DTR	GL	BW	200	400	600	MCW	MILK	DTC	SS	CW	EMA	RIB	RUMP	RBV	IMF	NFI-F
EBV	-3.1	-0.8	-2.0	+6.2	+49	+84	+110	+100	+18	-4.1	+1.2	+63	+7.4	+0.4	+0.9	+0.6	+1.7	-0.01
Acc	50%	40%	61%	63%	66%	69%	72%	64%	55%	33%	72%	58%	51%	55%	55%	50%	55%	42%
Per	87	83	88	89	54	69	65	50	45	66	81	61	35	38	28	40	61	26

July 2023 TransTasman Angus Cattle Evaluation

Traits Observed: 400WT,600WT,SC,Scan(EMA,Rib,Rump,IMF)

Purchaser: _____

Price: _____

LOT 38

WALLAWONG SOMERSET S161

IDENT: LEJ21S161 DOB: 01/10/2021 REGISTER: HBR

EF COMMANDO 1366^{PV}
S: HANSON PLATINUM BLACK P01^{PV}
MILLAH MURRAH ELA M80^{SV}

BT RIGHT TIME 24J[#]
D: ABBOTT PC WIDESPREAD D35[#]
PC MS WIDESPREAD W45[#]

\$ Index Values		
	ABI	ABLFCI
EBV	\$175	\$292
Perc	75	83



Comments: Somerset S161 is one of youngest bulls catalogued, and again displays sound muscularity and finish. This is mirrored in his EBVs, being in the top 10-19% for Fat EBVs. From a structurally sound female that bred well into her teens. Recommended for enterprises looking to produce offspring for the heavy supermarket trade.

Sire - HANSON PLATINUM BLACK P01

Genetic Status: AMFU,CA5%,DDFU,NHFU

TACE	CE DIR	CE DTR	GL	BW	200	400	600	MCW	MILK	DTC	SS	CW	EMA	RIB	RUMP	RBY	IMF	NFI-F
EBV	-1.4	+2.0	-3.9	+5.2	+43	+77	+94	+77	+15	-5.8	+1.8	+45	+5.0	+1.4	+2.5	+0.5	+0.5	+0.10
Acc	51%	44%	62%	62%	65%	69%	71%	64%	53%	39%	71%	59%	54%	57%	57%	52%	55%	45%
Per	80	61	64	74	79	85	89	85	70	21	60	95	65	19	10	47	89	39

July 2023 TransTasman Angus Cattle Evaluation

Traits Observed: 400WT,600WT,SC,Scan(EMA,Rib,Rump,IMF)

Purchaser: _____

Price: _____

CONSISTENT ● CARCASE ● PERFORMANCE





Farm Insurance

Specialist agricultural insurer, Achmea Australia, supports the 2023 Wallawong Premium Beef Bull Sale

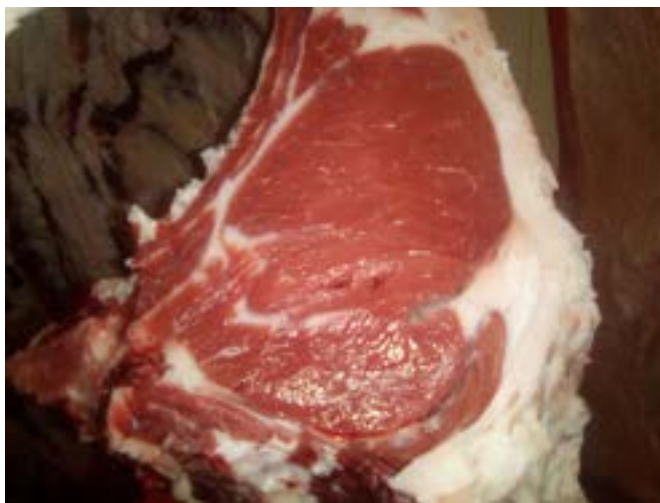


“Contact me directly to
insure your bulls with
Achmea Australia.”

DEBORAH MADDUX, Farm Insurance Specialist
0427 996 457 | deborah.maddox@achmea.com.au

www.achmea.com.au

Insurance issued by Achmea Schadeverzekeringen N.V. (Achmea) ABN 86 158 237 702 AFSL 433984. The information in this advertisement or article is general advice only and does not take into account your individual objectives, financial situation or needs (your personal circumstances). Before using this information to decide whether to purchase the insurance policy, you should consider your personal circumstances and the relevant Policy Wording available from the 'Downloads' section of our website www.achmea.com.au.



2019 Wingham Beef Week - Led Lightweight Champion



2018 Wingham Beef Week - Wallawong & Birchall
Winning Carcase



**Proud sponsor of
the Wallawong
Premium Beef Sale**

**Call the Rabobank Tamworth
team on 5711 1010**

BUYER'S INSTRUCTION SLIP

WALLAWONG PREMIUM BEEF CARCASE QUALITY BULL SALE 10th AUGUST 2023

PURCHASER'S NAME:
TRADING NAME:
ADDRESS: POST CODE:
PIC: PHONE:
EMAIL:

LOT PURCHASED: PRICE:
LOT PURCHASED: PRICE:
LOT PURCHASED: PRICE:
LOT PURCHASED: PRICE:
LOT PURCHASED: PRICE:

TRANSPORT ARRANGEMENTS:
.....

CATTLE TO BE TRANSFERRED TO:
.....

BUYER'S SIGNATURE: DATE:

NO VERBAL INSTRUCTIONS WILL BE ACCEPTED



2018 RAS Beef Challenge

Champion and Reserve Champion Pen of 6 - 100 Day Fed Wallawong Black Angus steers

TERMS AND CONDITIONS OF SALE

The Stock - As all lots are open for inspection prior to the commencement of the sale, the stock offered are to be sold with all faults and the buyer must satisfy themselves as to the condition, quality and fitness thereof before offering a bid. No error or misdescription shall invalidate any sale or give rise to any claim for compensation.

The vendor guarantees no animal has been given growth promotants of any kind.

All bulls are sold as being fertile and capable of natural service. The Wallawong Fertility Guarantee will occur if within two (2) years of the date of sale the purchaser submits a veterinary report certifying that the bull is infertile and/or not capable of natural service. The veterinarian will also be required to state that in their opinion the bull has not had any physical injury or illness since leaving the vendor's property, which injury or illness could have affected the bull's breeding ability. The circumstances of such an illness or injury must be notified by the purchaser to the vendor within one week of occurrence and the vendor will have the right to arrange a veterinary inspection if required. No claim will necessarily be recognised unless presented within two (2) years of the date of sale.

The Sale - The stock shall be at the risk of the buyer from the fall of the hammer whether delivered or not. The sale is at the vendor's discretion subject to a floor price. Subject to the aforesaid the highest bidder shall be the buyer. Bids will be exclusive of GST, with GST being added to the final sale price and invoiced to the purchaser. No bid shall be less than the previous bid. If any dispute arises respecting a bid, the lot shall be put up again at the last undisputed bid.

Payment - Unless otherwise stipulated, all lots shall be sold for cash. Interest at the rate from time to time charged by vendor shall be paid in any case where a purchaser makes default on due payment.

DISCLAIMER

Whilst all due care and attention has been paid to the accuracy in the compilation of this catalogue, neither the vendor nor the selling agents, breed associations or representatives therefore assume any responsibility (including consequential loss) whatsoever for the correctness, use or interpretation of the information (including, but not limited to pedigree, DNA information, EBVs, index values) on animals included in this catalogue.



CONSISTENT ● CARCASE ● PERFORMANCE

MATERNAL STRENGTH



Wallawong Emerald E66
Dam of Lot 16



Premier Lowan L24
Donor Dam of Lot 21



Bundaleer Lolita JOS H17
Dam of Lot 7



Woodbourn Queen F24
Donor Dam of Lot 28



Bundaleer T.T. B33
Donor Dam of Lot 5

The WALLAWONG Carcase ADVANTAGE



Champion and Reserve Champion Carcases - 2020 Wingham Beef Week

From right to left, these steers produced MSA indexes of 68.34, 68.89 and 65.87, making them one of the highest scoring pen of 3 MSA carcasses in Australian carcase competition history.



Silver, Grey or Black, the choice is yours.

Lachlan and Kate James

0402 839 373

lachlanj@yahoo.com

www.wallawong.com.au

‘Marriot Park’, Gunnedah, NSW



SCAN TO VISIT WEBSITE



Find us on Facebook - Wallawong Premium Beef